



## Chalet Dulcis Casu

Courchevel 1300, France



### What we love...

We love the privacy of the floodlit inner courtyard with outdoor hot tub.

Take a New York loft, add a private spa and mountain views, and you'll have a pretty good idea of the sort of holiday that awaits at Chalet Dulcis Casu. This luxury ski chalet in Le Praz (Courchevel 1300) is idyllically located just a snowball's throw from the village centre and main ski lifts. And for those that are looking for a chalet a little out of the ordinary, it's a great choice. Industrial-style lighting and fixtures and fittings, vaulted wood ceilings and faux-fur and animal hide furnishings combine to make you feel you're in a Manhattan loft apartment. If it weren't for the stunning mountain views from every window, you might just be convinced!

You really do feel like you're in your own private hotel here. When you're

not on the slopes you can relax with a massage on site, spend an hour or two steaming away aches and pains in the hammam, or swimming against the tide in the indoor pool. On a crisp evening, there's nothing like taking your bubbly out into the floodlit internal courtyard and sinking beneath the warm waters of the hot tub.

This is a wonderful ski chalet to share with friends if you're looking forward to a very upmarket house party. Sit back and let your experienced chef whip you up delicious menus, while you catch up with the rest of your party, relaxing around the suspended fire in the centre of the open-plan living spaces, or gazing out at your fabulous view of the Grand Bec.





## Chalet Dulcis Casu

### Rooms

Chalet Dulcis Casu sleeps up to 12 adults + 2 children in six bedrooms.

Bedrooms one and two  
Master bedrooms on first floor with en-suite bathrooms, dressing areas and shared balcony.

Bedroom three  
Double bedroom on ground floor with en-suite shower room.

Bedroom four  
Family bedroom on ground floor with a double bed plus bunk beds and en-suite bathroom.

Bedroom five  
Double bedroom on ground floor with en-suite bathroom.

Bedroom six  
Double bedroom on ground floor with en-suite shower room.

Rates are based on occupancy of up to 12 guests (additional guests carries a supplement charge).

### Eating

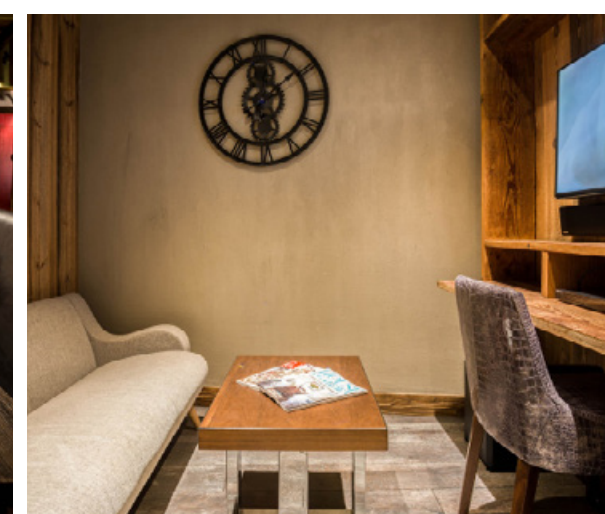
You'll be well fed and watered at Chalet Dulcis Casu with a private chef in the kitchen and a host to keep your drinks topped up. On arrival, Champagne and canapés will be ready for you, to help begin your luxury holiday on the right note.

Mornings start in style, with a selection of buffet plus freshly cooked breakfast to set you up nicely for a day on the slopes. On staff days off, a buffet breakfast will be provided.

When you return from your skiing day, you'll find a slap-up afternoon tea ready and waiting for you, with cakes and hot drinks to warm you through.

On five evenings, a gourmet dinner will be prepared by your chef, including canapés, cheese and petit fours. You'll also enjoy complimentary drinks including a choice of 18 wines and bubbly selected by Verre Gourmand, plus an open bar with beer, soft drinks and Nespresso coffee.

You'll have two evenings a week to sample the local restaurants and your chalet hosts will be more than happy to make recommendations and bookings.







## Chalet Dulcis Casu

### Kids

Chalet Dulcis Casu is a great chalet to take new skiers to, being so close to both the centre of town and the slopes, making life much simpler slope-side.

With an indoor swimming pool, as well as an outdoor hot tub, you should find little ones are nicely tired out by the end of the day. A separate TV room will keep them amused (and hopefully quiet!) while you enjoy a bit of adult conversation over afternoon tea or evening aperitifs.

Your private chef is able to do an early kids' tea on five evenings so that you can relax and really enjoy your dinner post-bedtime.

Nannies and babysitters can be booked on request.

### Facilities

Indoor swimming pool  
Outdoor hot tub  
Hammam  
Terrace  
Massage room  
TV/study room  
Ski and boot room  
Sky TV and Sonos sound system  
Wood burning fireplace  
Wifi

### Location

Chalet Dulcis Casu is located in a central position in Le Praz (Courchevel 1300) just moments from the village restaurants and shops and just 150m from the main gondola and high speed chair lift.

Grenoble and Chambéry airports are both less than 2 hours' drive away whilst Geneva is just over 2hrs drive.

### Staff

Firefly pre-arrival concierge service

Chalet staff include:  
Chalet manager  
Chef  
Daily housekeeping  
In-resort driver service  
In-resort concierge service

Additional staff such as nannies and massage therapists can be arranged on request.

