



## Chalet Le Roc Merlet

Courchevel 1850, France



### What we love...

We love the cosy living room with real wood fire.

The perfect combination of cosy and convenient – Chalet Le Roc Merlet is a luxury duplex apartment in Courchevel that's just steps from the slopes and a short drive to the centre of this glamorous resort.

Chalet Le Roc Merlet is offered on as self-catered basis, although a half-board option also available on request. Guests can also enjoy exclusive access to the nearby Le Strato Hotel's facilities, including the Michelin-starred restaurant as well as its wonderful spa facilities, with enormous swimming pool, bars and shuttle service.

But it's lovely to have the quiet and privacy of your own chalet to come back to as well. Le Roc Merlet has

been thoughtfully designed in a palette of muted shades to create a relaxed, calming atmosphere.

The living room is the ideal spot to relax with friends and warm drinks after a morning on the slopes. A roaring fire and super-comfy sofas provide a very warm and welcoming backdrop. Adjacent is the intimate dining area where you can enjoy leisurely meals by candlelight on day when you just want a quiet evening in.

At the end of each busy day, the stunning en-suite bedrooms beckon you to bed. Plump pillows, thick duvets and soft throws and blankets guarantee you the sweetest of dreams here.



## Chalet Le Roc Merlet

### Rooms

Chalet Le Roc Merlet sleeps 6 guests in three bedrooms.

**Bedroom one**  
Double/twin bedroom with en-suite shower room and balcony.

**Bedroom two**  
Double/twin bedroom with en-suite bathroom room and balcony.

**Bedroom three**  
Double/twin bedroom with en-suite bathroom room.

### Facilities

Ski-in/ski-out  
Balconies  
Wood burning fireplace  
Well-equipped kitchen  
Wifi

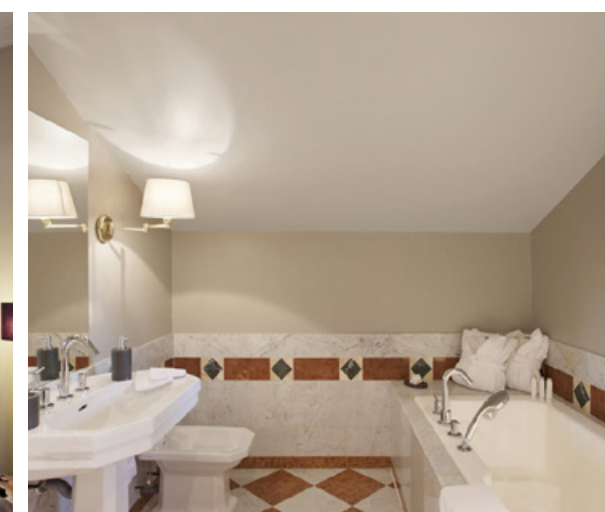
Access to the facilities at Le Strato Hotel including spa (sauna, steam room, Jacuzzi, indoor swimming pool), in-resort shuttle service, ski room and shop, restaurant and bar.

### Eating

Chalet Le Roc Merlet is offered on a self-catered basis, allowing you to follow your own schedule. The property is not far from some of Courchevel's best restaurants, such as the Michelin-starred Chabichou, which is one gourmands should not miss.

Alternatively, the property can be booked on a half-board basis, allowing you to dine at Le Strato Hotel's fabulous Michelin-starred Baumaniere 1850 restaurant. A Mediterranean-inspired menu with an Alpine twist, it offers the freshest seafood on the mountain as well as reinvented classic desserts, such as Mont Blanc. It's an experience every gourmand should enjoy.

Alternatively, you might wish to cook for yourselves and the chalet has a well-equipped kitchen for you to use.







## Chalet Le Roc Merlet

### Kids

Children are warmly welcomed at Chalet Le Roc Merlet.

Le Strato Hotel has an indoor swimming pool and a lovely snowy-themed play area, complete with its own igloo, which younger children will enjoy. The chalet's proximity to the slopes makes it a good choice for families.

Nannies and babysitters can be booked on request.

### Staff

Firefly pre-arrival concierge service

Chalet staff include:  
Daily housekeeping  
Access to the staff at Le Strato Hotel

Additional staff such as nannies and babysitters can be arranged on request.

### Location

This luxury ski chalet in Courchevel 1850 has ski-in/ski-out access onto the Cospillot piste, and is located just 50 metres from the slopes in the exclusive Bellecote area. The resort centre is just a few minutes drive away and Le Strato Hotel runs a complimentary ski shuttle service 24 hours a day.

The nearest airport is Chambéry, approximately 1 hour 30 minutes drive, whilst Grenoble and Lyon airports are approximately 2 hours 10 minutes and Geneva airport is 2 hours 20 minutes drive away. Moutiers rail station is also just 30 minutes' drive.

There is also an altiport in Courchevel 1850 for those travelling by helicopter or private jet.

