



## Chalet Les Pyramides Courchevel 1850, France



### What we love...

We love the exclusive feel that Chalet Les Pyramides emanates within the Les Deux Chalets complex, with its south and east facing balconies you feel as if you are in another world.

Enjoying the peace of a private chalet and the wonderful facilities of a high-class hotel, this luxury ski chalet in Courchevel is a real winner. Chalet Les Pyramides is a duplex apartment within the Les Deux Chalets complex, but guests of the chalet enjoy exclusive access to the nearby Le Strato Hotel's facilities, too.

Chalet Les Pyramides can also be taken on a half-board basis allowing you to enjoy the Michelin-starred restaurant at Le Strato as well as its wonderful spa, with enormous swimming pool, bars and shuttle service.

It's also very close both to the slopes and the town centre, so if you decide to take a day away from the slopes you can instead spend

it wandering among the shops and boutiques of Courchevel, soaking up the atmosphere.

The apartment itself has been designed to be exceedingly comfortable and relaxing, in calming shades of grey and neutrals, with a large L-shaped sofa that invites you to sprawl in front of the log fire. Nearby is a cosy dining space, with round dining table to seat you all, for long, leisurely breakfasts and simple suppers on evenings when you just want to hunker down indoors with good food and good company.

Just like the rest of the apartment, the en-suite bedrooms are both chic, contemporary and cosy. A joy to retreat to at the end of the evening.



# Chalet Les Pyramides

## Rooms

Chalet Les Pyramides sleeps 4 + 1 guests in two bedrooms.

**Bedroom one**  
Double/twin bedroom with additional single bed and en-suite bathroom.

**Bedroom two**  
Double/twin bedroom with en-suite bathroom.

## Facilities

- Ski-in/ski-out
- Balconies
- Wood burning fireplace
- Well-equipped kitchen
- Wifi

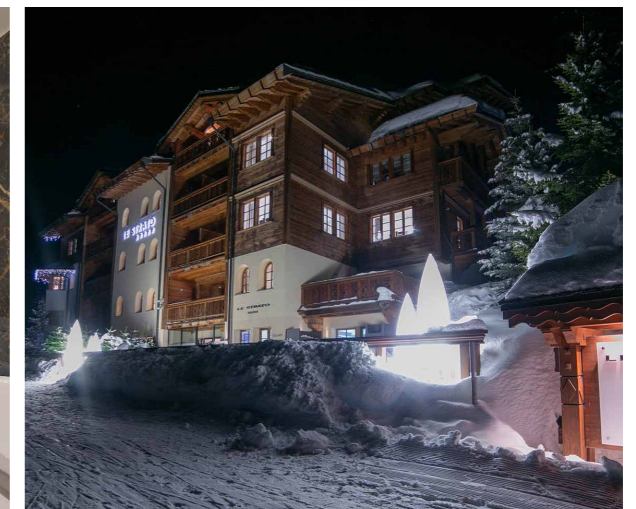
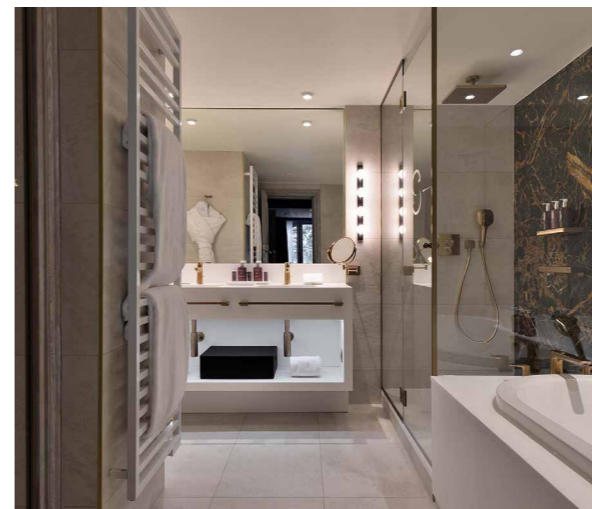
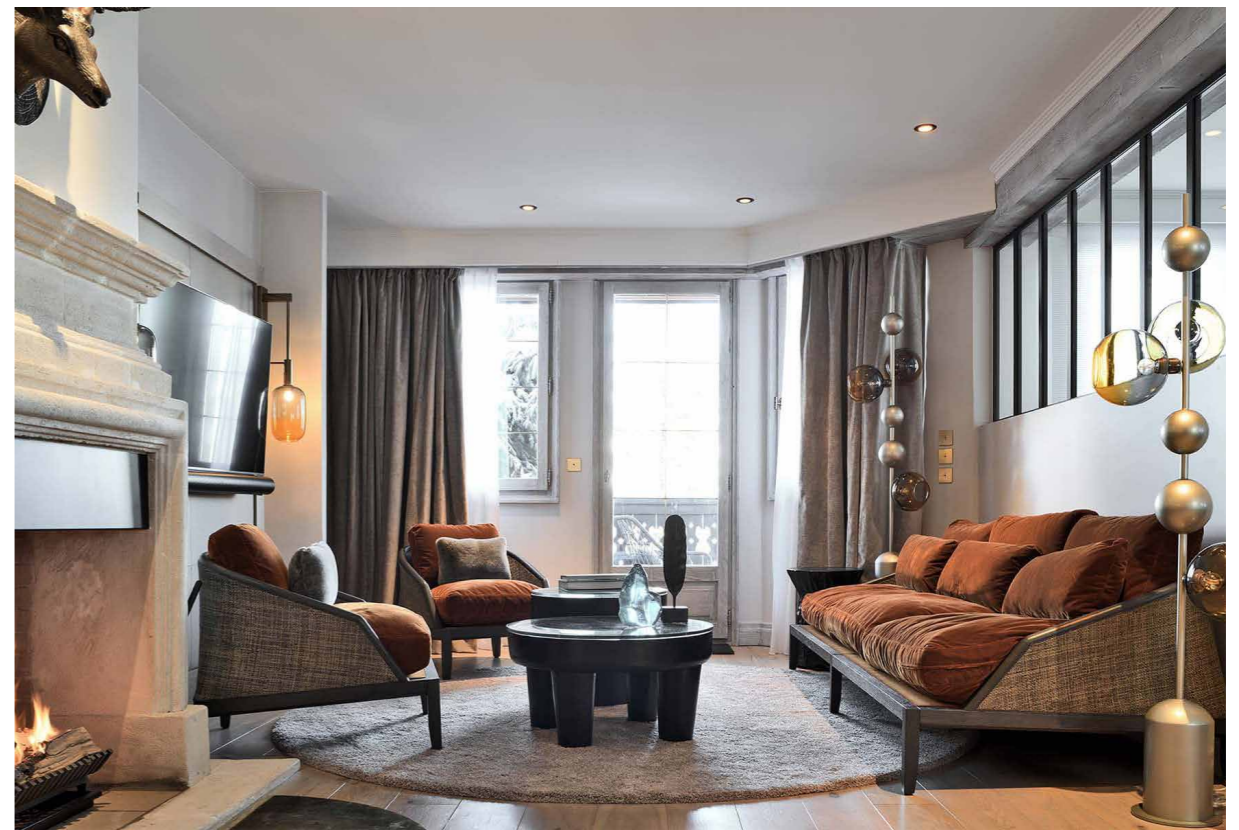
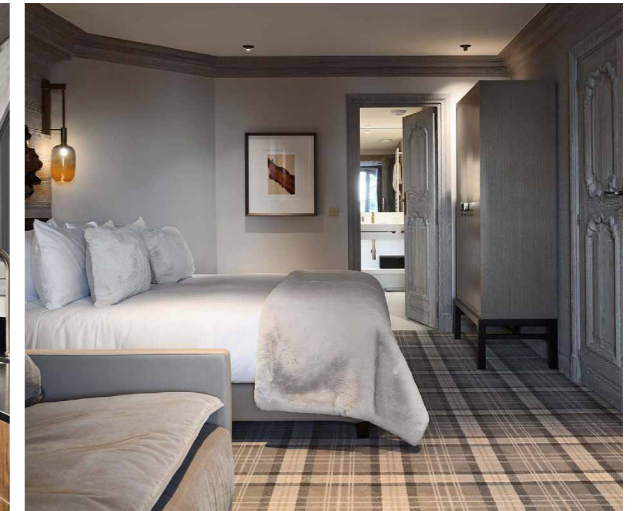
Access to the facilities at Le Strato Hotel including spa (sauna, steam room, Jacuzzi, indoor swimming pool), in-resort shuttle service, ski room and shop, restaurant and bar.

## Eating

Chalet Les Pyramides is offered on a self-catered basis, allowing you to follow your own schedule. The property is not far from some of Courchevel's best restaurants, such as the Michelin-starred Chabichou, which is one gourmands should not miss.

Alternatively, the property can be booked on a half-board basis, allowing you to dine at Le Strato Hotel's fabulous Michelin-starred Baumaniere 1850 restaurant. A Mediterranean-inspired menu with an Alpine twist, it offers the freshest seafood on the mountain as well as reinvented classic desserts, such as Mont Blanc. It's an experience every gourmand should enjoy.

Alternatively, keen cooks will love the well-equipped kitchen if you prefer to cater for yourselves.





# Chalet Les Pyramides

## Kids

Children are welcome at Chalet Les Pyramides and its proximity to the slopes makes it a good choice for families.

Le Strato Hotel, nearby, has a lovely snowy-themed play area, complete with its own igloo, which younger children will enjoy. They'll also love splashing in the hotel's swimming pool after ski school.

Nannies and babysitters can be booked on request.

## Staff

Firefly pre-arrival concierge service

Chalet staff include:  
Daily housekeeping  
Access to the staff at Le Strato Hotel

Additional staff such as nannies and babysitters can be arranged on request.

## Location

This luxury ski chalet in Courchevel 1850 has ski-in/ski-out access onto the Cospillot Piste. The resort centre is just a few minutes drive away and Le Strato Hotel runs a complimentary ski shuttle service 24 hours a day.

The nearest airport is Chambéry, approximately 1 hour 30 minutes drive, whilst Grenoble and Lyon airports are approximately 2 hours 10 minutes and Geneva airport is 2 hours 20 minutes drive away. Moutiers rail station is also just 30 minutes' drive.

There is also an altiport in Courchevel 1850 for those travelling by helicopter or private jet.

