



## Chalet Ambre Val d'Isere, France



### What we love...

We love the warm and welcoming indoor swimming pool.

Set in its own private hamlet, close to Val d'Isère's Old Town, Chalet Ambre is a total retreat from the world. The quiet in its wood-clad rooms is almost palpable, making it a bolthole you can really relax in.

Contemporary furnishings in neutral shades and a welcoming open fire create a warm reception in the chalet's living room and a great spot to chill out with friends, catching up on the day's events and enjoying a drink before dinner. The dining room is open plan to the kitchen so you can watch your talented chef at work – that is on nights when you aren't spoiling yourself for choice in one of the complex's two wonderful restaurants. Japanese and French flavours mean there's something for

everyone here, whether you want delicious but light courses or rib-sticking French gastronomy to warm you through.

On returning from the slopes each day, why not fit in an hour or two in the lovely private spa down on the lower ground floor, with sauna, steam room and pool to relax in, or book your slopes-weary limbs in for a massage.

When you retire to your super-comfortable bed each night, with cotton sheets and huge pillows, well fed and with the warm fuzz of fine wines, mountain air and the heat of a roaring fire in your cheeks, you won't have any trouble dropping off.



# Chalet Ambre

## Rooms

Chalet Ambre sleeps 10 adults + 2 children across five bedrooms

**Bedroom one:**  
Double/twin bedroom on first floor with en-suite bathroom and balcony access.

**Bedroom two:**  
Family room on first floor with double/twin bed, adjoining bunk room for 2 children and en-suite bathroom.

**Bedroom three:**  
Double/twin bedroom on first floor with en-suite bathroom.

**Bedroom four:**  
Double/twin bedroom on second floor with en-suite bathroom.

**Bedroom five:**  
Double/twin bedroom on third floor with en-suite bathroom and balcony access.

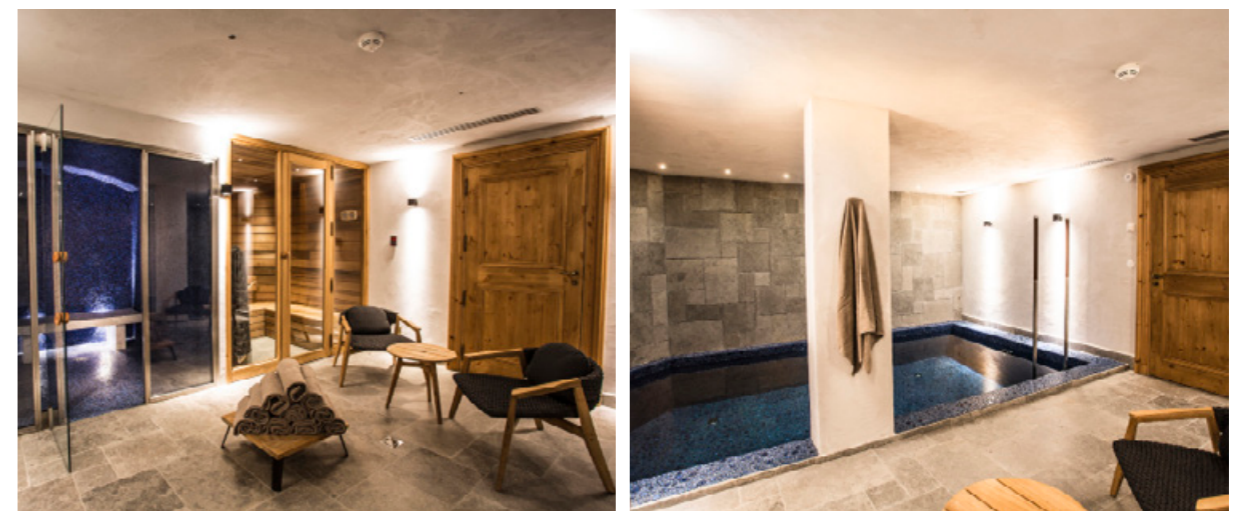
## Eating

It's five star luxury all the way at Chalet Ambre, from the moment that the Champagne reception is served on arrival. A team of chalet staff work away in the background, pampering you with delicious food and drink.

The chalet is offered on a catered basis, inclusive of daily breakfast and afternoon tea. Your experienced private chef whips up gourmet dinners and before you even arrive at Chalet Ambre, you have the opportunity to consult with the chef on any particular preferences or dietary requirements. The attention to detail and superior service mark this chalet out as being top notch.

Your chef will also be happy to prepare an early 'children's tea' to enable you to enjoy your evening meal at your leisure later on.

Please note that alcoholic drinks will be charged for separately.





## Chalet Ambre

### Kids

Little ones are most welcome at Chalet Ambre. There's plenty of space for them to play and they'll love splashing in the private swimming pool.

The largest room has a separate sleeping area with bunks in, ideal for a young family.

Getting to and from the slopes with little ones couldn't be easier either with an in-resort shuttle service to whisk you around.

If you want to ski alone or pop out for an evening, babysitters can be booked on request.

### Location

Chalet Ambre is part of the exclusive La Mourra luxury chalet-hotel complex, set on the edge of the old town of Val d'Isère and is just moments away from the town centre yet with easy access to the slopes.

Chambery airport is just under 2 hours drive away, whilst Geneva is approximately 3 hours away.

### Staff

Firefly pre-arrival concierge service

Chalet staff include:  
Chalet manager  
Chef (6pm - 11pm)  
Butler (7.30 - 11am / 6pm - 11pm)  
Daily housekeeping  
Hotel concierge service (24hrs)  
In-resort shuttle service (7.30am - 11.30pm)

Additional staff such as nannies and massage therapists can be arranged on request.

### Facilities

Indoor swimming pool  
Sauna  
Steam room  
Massage cabin  
Fireplace in living room  
Ski room  
Lift  
Wifi  
24h room service  
Covered parking for 2 cars with direct access to chalet

