



## Kikombe Lodge St Anton



### What we love...

We love the sociable open-plan living area with central fireplace and characterful wooden beams overhead.

Kikombe Lodge is a wonderful self-catered ski holiday for larger families or groups of friends looking for privacy and indulgence while enjoying a lively après scene in the buzzing St Anton resort, just a short walk away.

This loft-style-meet-traditional-chalet offers the perfect balance of cool and cosy with its classic rustic décor, stylish high-spec furnishings and spacious open-plan design. The cosy lounge area is centred around a warming feature fireplace with characterful wooden beams overhead, plush rugs underfoot and snug seating nooks to curl up in.

During the day, the chalet is bright and airy, with sunlight pouring in through the large panoramic windows that give views of the Rendl ski area. As dusk falls, the cosy atmosphere takes over; the warm glow of the fire, characterful beam lighting, and inviting sofas with plumped-up cushions made for sinking into with a glass of red wine in hand.

The property is set over three floors. The first floor is all about sociable open-plan living; a sleek kitchen comes complete with Miele appliances, while the bespoke solid wood dining table seats 10 people – ideal for sharing-style dinners. On the ground and lower ground floors, elegant bedrooms are reminiscent of those you would find on a country estate. Each has its own en-suite bathroom or shower room, and the master also features a walk-in wardrobe.

This luxury ski chalet in St Anton has all the must-haves you'd expect from the highest level of comfort: a Swedish-style sauna, massage room, private laundry and boot room with heated boot warmers. A concierge service is available before and during your stay to take care of everything you might need, from lift passes to in-chalet massages and childcare.



# Kikombe Lodge

## Rooms

Kikombe Lodge sleeps 8 + 2 guests across five bedrooms.

### Bedroom 1:

Master double/twin bedroom on lower ground floor with en-suite bathroom, walk-in wardrobe and TV.

### Bedroom 2:

Double/twin bedroom on lower ground floor with en-suite bathroom.

### Bedroom 3:

Twin bedroom on lower ground floor with en-suite shower room.

### Bedroom 4:

Double/twin bedroom on ground floor with en-suite bathroom.

### Bedroom 5:

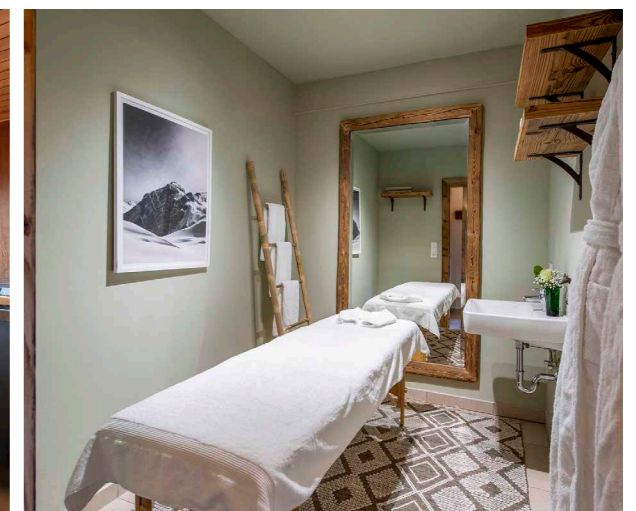
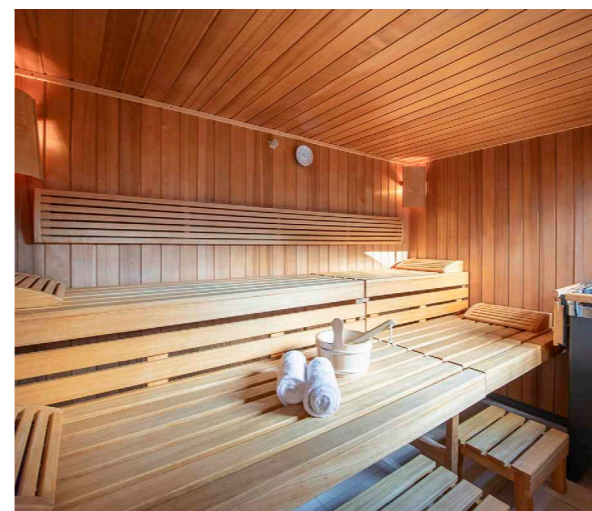
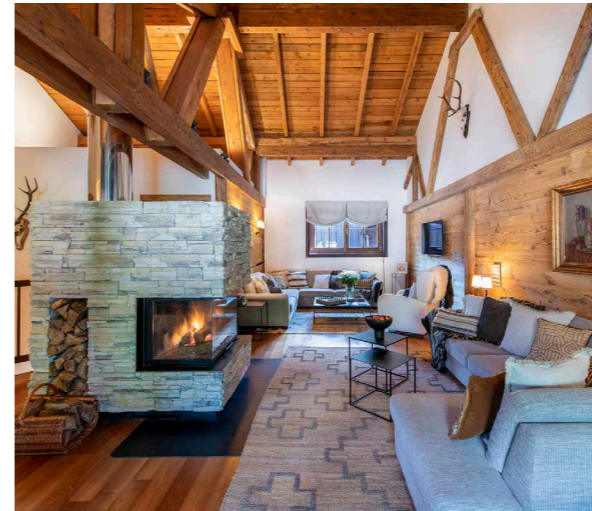
Double/twin bedroom on ground floor with en-suite shower room.

## Eating

Kikombe Lodge is offered on a self-catered, allowing you to choose how, where and when you dine.

If you plan to cook in the sleek, fully equipped kitchen, a pre-arrival shopping service can be arranged at extra cost so that all your ingredients are there for you when you arrive. The lodge also has a barbecue for sizzling up relaxed al fresco feasts.

There's an excellent choice of eateries in the village of St Anton – and up on the slopes – from cosy Austrian cabins to sophisticated mountain restaurants. The resort staff will be pleased to assist with restaurant suggestions and reservations.





## Kikombe Lodge

### Kids

Children are very welcome at this luxury ski chalet and booking on a self-catered basis gives you the freedom to set your own schedule around little one's routines if needed. The optional pre-arrival shopping service means you can be sure that children have all their favourite foods and snacks to hand.

After a busy day on the slopes, kids can curl up in the TV corner and enjoy their favourite films, whilst grown ups can catch up in the adjacent main living area.

Childcare can be arranged through the concierge, as can ski lessons and fun non-ski activities such as tobogganing and ice-skating.

### Facilities

- Massage treatment room
- Sauna
- Wood-burning fireplace
- Fully-equipped kitchen
- Wifi
- Laundry facilities
- Terrace
- Integrated sound system
- Heated ski and boot room
- Open-plan living area
- TV corner with Smart TV

### Location

Kikombe Lodge is a 15-minute walk from St Anton's village centre, where you'll find stylish restaurants and a thriving après-ski scene.

It's just a three-minute drive from Galzigbahn and Rendlbahn lift and 200m from the nearest bus stop.

The nearest Innsbruck airport is around 1 hour and 15 minutes' drive away, while Friedrichshafen airport (1 and a half hours) and Zurich airport (2 hours) are also convenient options.

### Staff

Firefly pre-arrival concierge service

Chalet staff include:  
Housekeeper (self-catered basis)  
In-resort concierge service

Additional staff such as nannies and massage therapists can be arranged on request.

