



Fabiola Penthouse St Anton



What we love...

We love the outstanding mountain views and the sense of peace that this quiet and very private apartment offers.

Sometimes you just need to go straight to the top to get what you want. Go straight to the top of the exclusive Chalet Fabiola and you'll find the dreamy Fabiola Penthouse.

Offering traditional chalet style with a contemporary twist, this luxury ski apartment is a wonderful base in St Anton. Natural materials and a neutral palette create a quiet and cosy atmosphere inside. Rustic woods and stone, exposed rafters and a pared-back style make this property somewhere it's virtually impossible not to relax. Natural light floods the whole apartment through floor-to-ceiling windows and panoramic mountain views bring nature right inside.

The heart of the penthouse is the open-plan living area, where an L-shaped sofa and comfy armchairs with cosy throws to create an area for you all to sit back and relax

around the roaring fire (please note there is no TV at this property). Once you've kicked off your skis in the ski room downstairs and poured yourself a drink, there's nowhere nicer to rest tired legs than in the penthouse's living room, warmed by the fire and watching the snow fall outside.

A modern dining room, with mid-century style table and chairs, lit by low pendants, is adjacent to the living space. You'll enjoy long, leisurely meals here, equipped with every mod con.

On snowy afternoons, when you return from the mountain, head downstairs to the shared wellness area to treat both body and mind, or head out onto the penthouse's sunny terraces to take in the mountain air and make the most of that amazing view.



Fabiola Penthouse

Rooms

Fabiola Penthouse sleeps up to 6 + 6 guests in five bedrooms.

Bedroom 1

Double bedroom with king size bed and ensuite bathroom with balcony access.

Bedroom 2

Double bedroom with king size bed and ensuite shower room with balcony access.

Bedroom 3

Double bedroom with king size bed and ensuite shower room.

Bedroom 4

Bunk room with additional trundle bed (sleeps 3) and ensuite shower room with balcony access.

Bedroom 5

Bunk room with additional trundle bed (sleeps 3) and ensuite shower room.

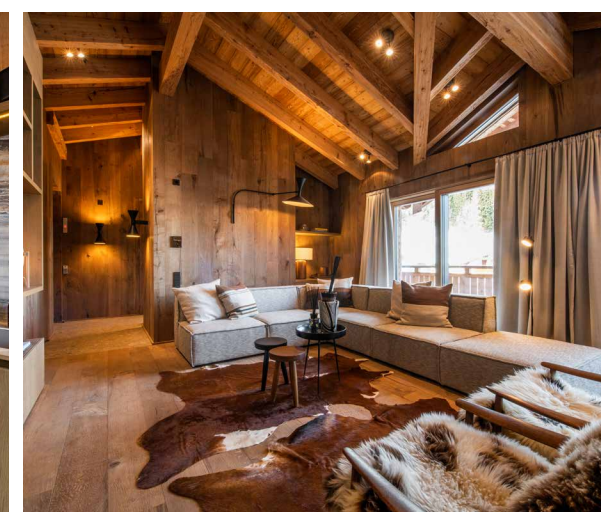
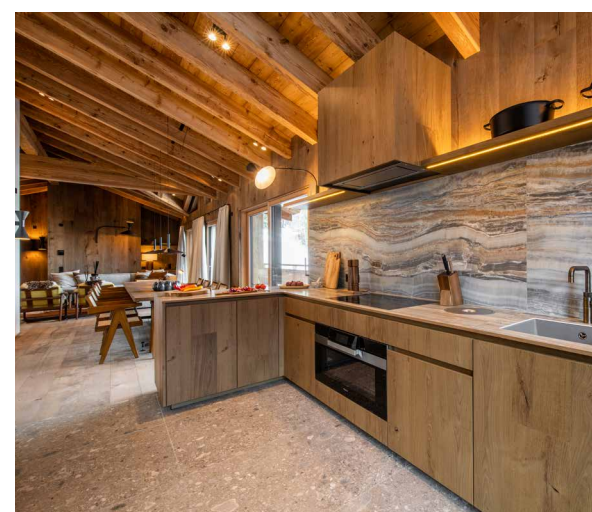
Please note all beds are fixed and cannot be split into twins.

Eating

St Anton is known as a bit of a haven for foodies, so if you want to spend more time exploring its various eateries, you're welcome to book the penthouse on a self-catered or bed and breakfast basis, leaving you free to sample different restaurants each evening.

The chalet's concierge will be happy to help you book the best tables at the best restaurants. We particularly like to enjoy lunch or après ski at Griabli, set right on the Galzig downhill run. For an evening meal, it's hard to beat the restaurant at the Hotel Kosslerhof for its creative menu that's always full of delightful surprises.

For evenings in but you don't fancy cooking, hot meals can be pre-ordered and delivered (additional food and delivery service applicable).





Fabiola Penthouse

Kids

With two bunk rooms, each sleeping three, the penthouse is a fantastic family-friendly ski chalet for a group travelling with children, with plenty of space for them to bunk in together across two bedrooms.

The open-plan living spaces provide room for little ones to play, and your concierge is always on hand to help with anything you need, whether that's booking nannies, ski school hours or organising family activities away from the slopes.

Facilities

Fireplace
Wifi
Shared ski room
Balconies
Private parking
Ski-in access (in good snow conditions)
Concierge
Shared wellness area with sauna/
gym/massage treatment room
Hairdryer in every bedroom

Staff

Firefly pre-arrival concierge service

Chalet staff:
Resort manager
Housekeeping
In-resort concierge

Additional staff such as nannies and massage therapists can be arranged on request.

Location

This luxury apartment takes over the entire top floor of the exclusive Chalet Fabiola building, which is home to four chic apartments.

The nearest Zammermoos piste is a short walk away (approx. 250 metres), where you can ski down to the Galzigbahn, Gampenbahn and Rendlbahn lift stations. In good snow conditions, confident skiers can also ski back to the property.

Enjoying St Anton's après-ski scene couldn't be easier, as the famous MooserWirt is a short walk away. The centre of St Anton is approx. 25 minutes walk, where you'll find a huge selection of bars, restaurants and shops to explore.

The nearest airports are Innsbruck approx. 1hr 15mins away and Zurich approx. 2hrs 20mins away.

