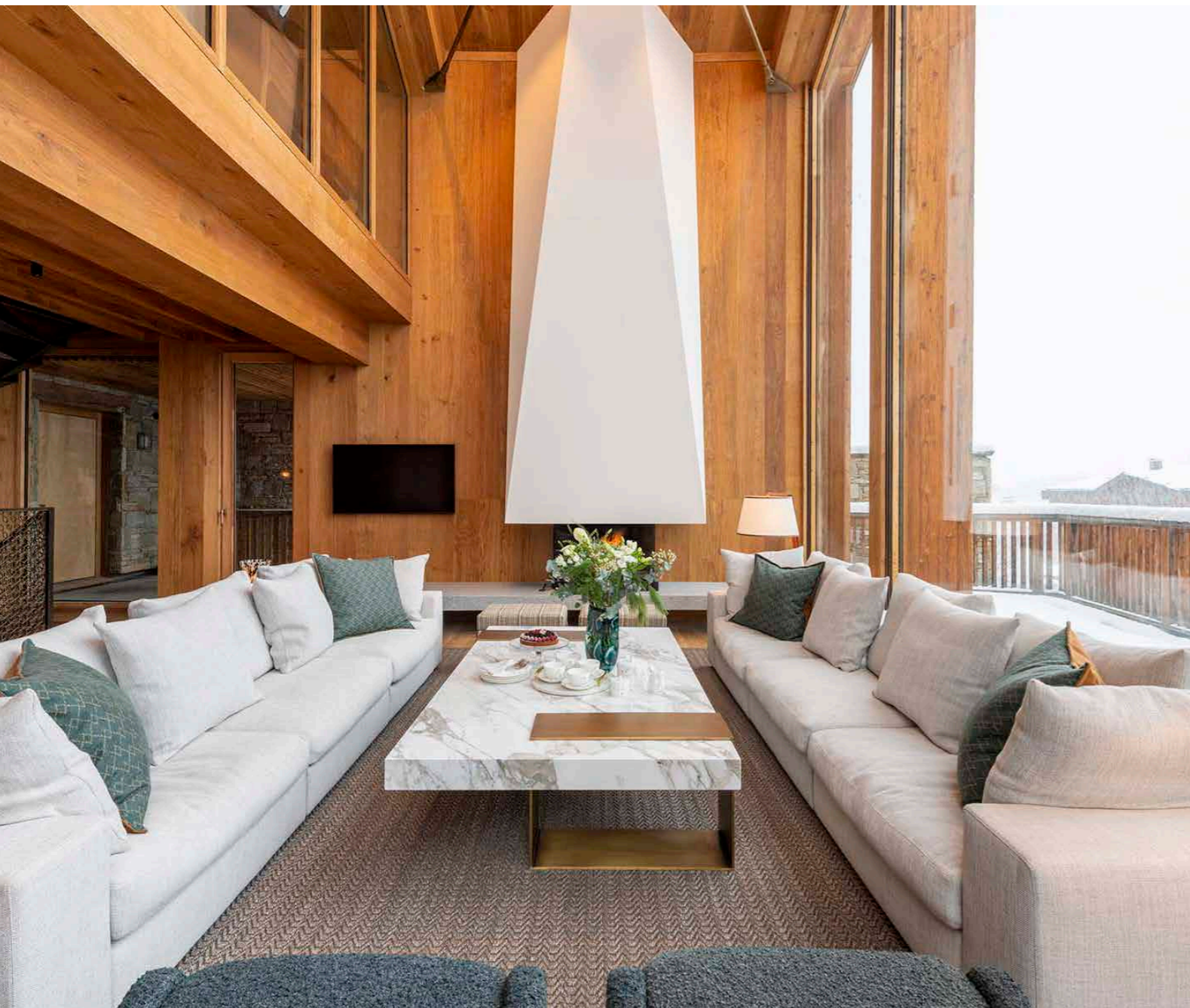




Etoile du Nord – East Wing Val d’Isere



What we love...

We love the indoor/outdoor swimming pool, where you can dive down to a glass viewing window in the warmth or swim outside under falling snow.

The stunning and sophisticated Etoile du Nord is set to become one of the most exclusive luxury ski chalets in Val d’Isere. Newly built for the 2023 winter season and comprising two adjoining chalets (East Wing and West Wing), its private location, masterful architecture and pristine facilities – including an innovative indoor/outdoor swimming pool – guarantee a luxurious stay.

This luxury ski chalet’s stand-out features don’t end there. In the spacious yet cosy games and movie room, a viewing window allows an impressive glimpse into the underwater world of the swimming pool. The pool itself is a remarkable feat – a retractable glass wall allows for both indoor and outdoor swimming, and even the depth of the swimming pool can be adjusted. A luxe and light-filled spa rounds things off – end your days with a massage, steam room session or soothing soak in the outdoor hot tub.

The impressive double-height lounge is the wow-factor room of this palatial, contemporary home,

featuring plush sofas focused around a modern open fire and soaring floor-to-ceiling mountain-facing windows. Perfect for supreme relaxation or mingling with good friends and family. It’s particularly magical at twilight when the peaks start to silhouette against the colour-changing sky.

A glossy bespoke kitchen has top-of-the-range Miele appliances so there are no limits for your private chef. The stone island is the perfect spot for guests to gather over pre-dinner drinks and chat about their day. Service here can be as relaxed or as formal as you require – help yourself to drinks from the bar fridge or ask your butler to whip up your favourite concoction; request fine dining multi-course dinners or get stuck in with family-style feasts.

After a wonderful day out in the snow, fun in the pool, relaxation in the spa area and delicious meals look forward to the sumptuous bedrooms which are soft and sleek, decked out in a modern alpine style with plenty of oak accentuated by chic greys, plump pillows and stylish marble bathrooms.



Etoile du Nord – East Wing

Rooms

Etoile du Nord (East Wing) sleeps up to 12 + 2 guests in seven bedrooms.

Bedroom one

Master double bedroom on top floor with en-suite bathroom, balcony and private outdoor hot tub.

Bedroom two

Double/twin bedroom on ground floor with en-suite bathroom.

Bedroom three

Double/twin bedroom on ground floor with en-suite shower room.

Bedroom four

Double/twin bedroom on ground floor with en-suite shower room.

Bedroom five

Double bedroom on lower ground floor with en-suite bathroom.

Bedroom six

Double bedroom on lower ground floor with en-suite shower room.

Bedroom seven

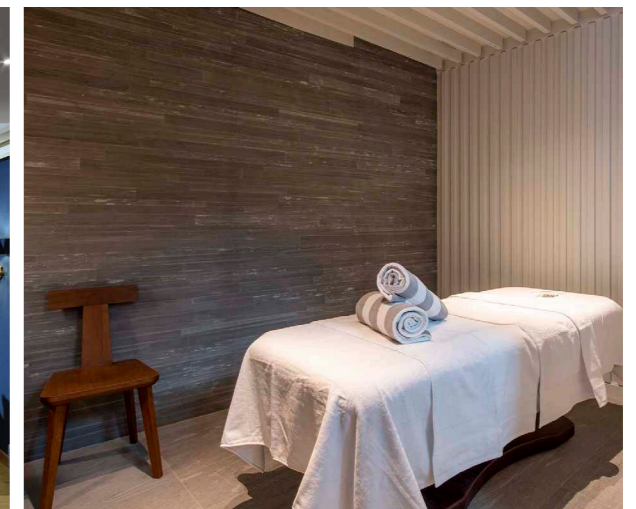
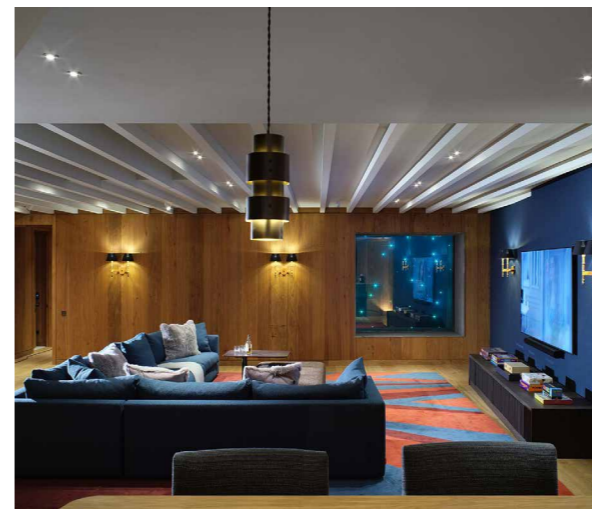
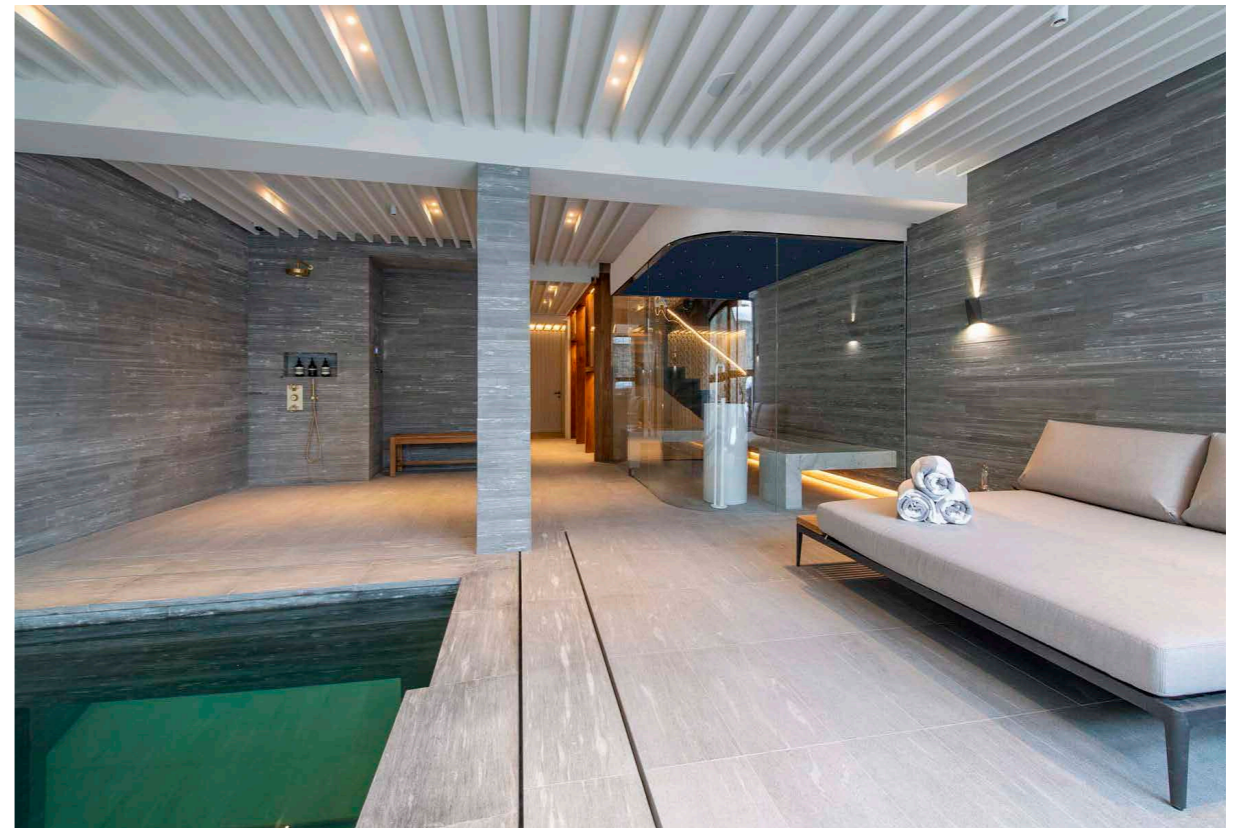
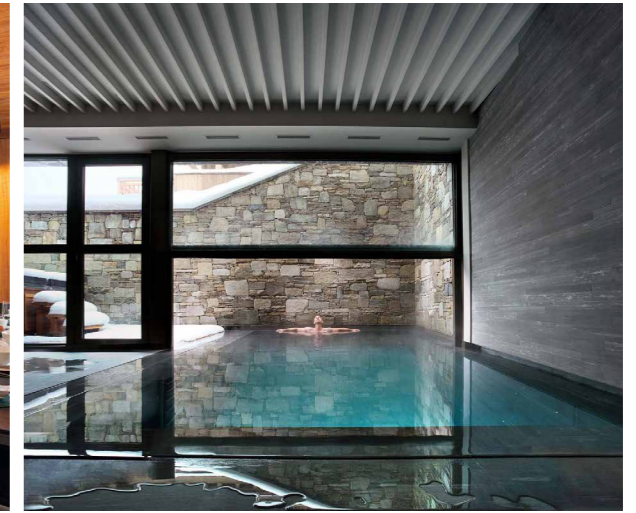
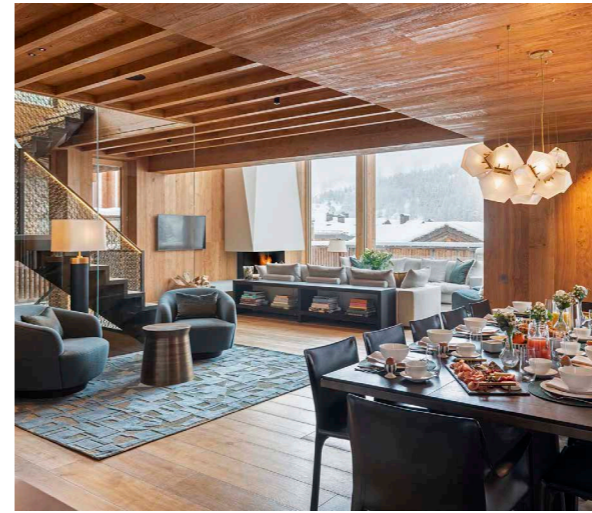
Quad bunk room on lower ground floor with en-suite shower room.

Etoile du Nord comprises two adjoining chalets, East Wing and West Wing, that can be booked together for larger groups.

Eating

Etoile du Nord comes with the services of a private chef. The smell of freshly brewed coffee will ease you into the day and there'll be plenty of delicious breakfast options to fill you up ahead of a morning on the slopes. When you return to the chalet, afternoon tea will be waiting for you in the beautiful lounge, so you can tuck into sweet treats and catch up on your day so far. Dinner can also be fully customised to your preferences, so simply think of your favourite dishes ahead of your stay and your chef will bring them to life.

Please note that the cost of food and drinks are charged for separately, to allow your experience to be tailored to your requirements. Breakfast and afternoon tea are served seven days per week, with dinner served six days per week, giving you one night to self-cater or sample one of Val d'Iserre's top eateries.





Etoile du Nord – East Wing

Kids

Etoile du Nord is a family-friendly home and childcare can be arranged through your in-resort concierge. The spacious bunk room sits off the games room and the whole area can be opened up for the ultimate sleepover space. The indoor swimming pool's depth can also be adjusted to suit little legs, letting them splash around safely.

Kids will adore the ski and non-ski activities in Val d'Isere. There are well-groomed pistes for beginners and intermediates, as well as ice rinks and the Centre Aquasportif with its climbing walls and swimming pools for indoor fun. And with your chalet's private chauffeur service, little ones can be whisked from the slopes to the movie room in minutes.

Staff

Firefly pre-arrival concierge service

Chalet staff include:

Chalet manager
Chef
Chalet host(s)
Daily housekeeping
In-resort driver service
In-resort concierge service

Additional staff such as nannies and massage therapists can be arranged on request.

Location

The chalet is located in an enclave known as Petite Alaska, just a 10-minute walk or two-minute drive to the slopes and a short walk from Val d'Isere's top boutiques, restaurants and après-ski bars.

There's a dedicated chauffeur service (8am-1am daily) to whisk you around the resort, and Val d'Isere has an excellent modern lift system to make getting around a breeze.

The nearest airport is Chambéry approx. 2hrs 30mins away, with Geneva, Lyon and Grenoble all approx. 3hrs 30mins away.

Facilities

Indoor/outdoor swimming pool
2 outdoor hot tubs
Massage treatment room
Wood-burning fireplace
Home cinema room
Spa and wellness area & Hammam
Lift
Games room with pool table
Sonos sound system
Balconies and terraces
Large underground garage
Heated ski and boot room
Flatscreen TVs & Wifi
Peloton bike

