



## Le Chateau Provence



### What we love...

We love the wow-factor arrival, passing through organic vineyards and olive groves to reach a towering cypress-lined driveway that reveals the chateau in all its glory.

Le Chateau is a truly special place for a luxury villa holiday in Provence. Set at the heart of the vast Chateau de Berne luxury wine estate, this refined family residence offers the chance to be King or Queen of your very own 18th-century castle.

From the moment you drive through the organic vineyards and olive groves, and down the tucked-away cypress-lined driveway, you'll be enveloped in a fairy tale atmosphere. A stay at this gorgeous chateau is all about wellness, relaxation and quality time with family and friends.

Recently renovated in a glorious Provençal style, yet retaining wonderful period features, Le Chateau has something to admire around every corner. Here, you can host large family meals around the farmhouse table, relax with drinks in

the bar and gather around the piano for a sing-along.

Away from the sociable spaces, seven en-suite bedrooms are accessed by a grand marble staircase or elevator. Each light and airy room is incredibly spacious and is charmingly named after a city in Provence.

Outdoors, spend sunny days around the swimming pool and play team games of petanque. The former stables have been converted into a wonderfully grown-up zone with a bar, beautiful library and meeting room.

In the wider Chateau de Berne estate, there's the chance to unwind at the Cinq Mondes spa, cycle past vineyards, forests and rivers, and sip your way through wine tasting tours.



# Le Chateau

## Rooms

Le Chateau sleeps 14 + 6 guests across 7 bedrooms.

Bedroom 1 – Avignon  
Double bedroom with a 200x200mm bed and en-suite bathroom

Bedroom 2 – Arles  
Double/twin bedroom with two, 100x200mm beds and en-suite bathroom

Bedroom 3 – Nîmes  
Double bedroom with a 200x200mm bed and en-suite shower room

Bedroom 4 – St Rémy  
Double bedroom with a 180x200mm bed and en-suite bathroom – please note this bedroom can have a further two single 90x200mm beds, added to accommodate up to 2 children

Bedroom 5 – Aix-en-Provence  
Double bedroom with a 200x200mm bed and en-suite bathroom – please note this bedroom can have a further four single beds added to accommodate up to 4 children

Bedroom 6 – St Tropez  
Double bedroom with a 200x200mm bed and en-suite shower room

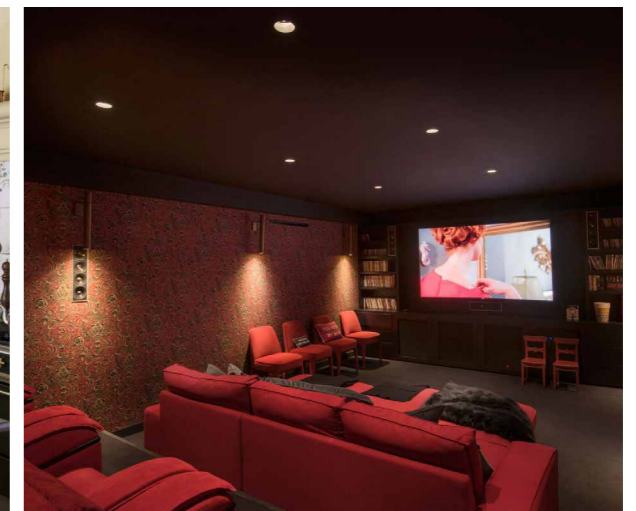
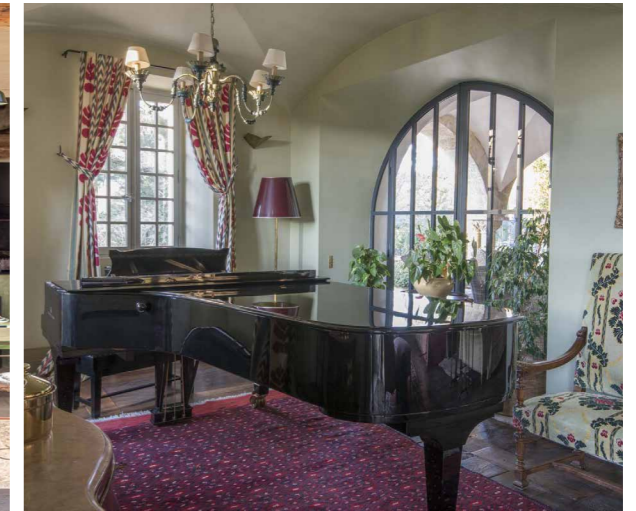
Bedroom 7 – Gordes  
Double/twin bedroom with two, 100x200mm beds and en-suite shower room

## Eating

The kitchen is the hub of the home at Le Chateau. A large farmhouse table takes centre stage – the perfect place for embracing the hubbub of extended family mealtimes. In the well-equipped open-plan kitchen, the piece de resistance is the ‘cooking piano’, which makes it easy to juggle cooking for all the family.

If your plan is to spend as much time outside as possible, the summer kitchen – complete with barbecue and pizza oven – offers plenty of options for relaxed al fresco lunches and dinners. Tuck into fresh feasts in a peaceful outdoor setting or seek shade in the pool house.

On the estate, you have the luxury of being able to dine at the Michelin-starred – and green-starred – restaurant, Le Jardin de Berne. Recognised for its authentic produce and eco-responsible approach, this exceptional eatery serves up innovative pairings in an inimitable setting. The hotel has two further restaurants and a bar.





# Le Chateau

## Kids

With large lawned gardens, a swimming pool and a pétanque court, the outdoor space at Le Chateau is a playground in itself.

Indoors, the cinema room will elevate movie nights to another level.

Two of the chateau's bedrooms are dedicated family rooms. St Remy can sleep two adults and two children, while Aix-en-Provence can cater for two adults and four children.

You also have free access to the hotel's tennis court and miles of hiking and biking trails on your doorstep – all that fresh air should help with early bedtimes.

The estate team are on hand to assist with any extras you might need.

## Staff

Firefly pre-arrival concierge service

Villa staff include:  
In-resort concierge  
House keeper

Additional services such as a private chef, cooking classes and nannies can be arranged on request.

## Location

Le Chateau sits at the heart of the 1500-acre Chateau de Berne luxury wine estate in Provence, with sweeping views of vineyards, forests and olive groves. It's nestled between Lorges and Flayosc, approximately an hour away from St Tropez's coast.

It takes around an hour to reach the property from St Tropez airport. Toulon, Nice and Marseilles can all be reached in under 1 hour 30 minutes. If you travel by train, it's only 25 minutes' drive from Les Arcs-Draguignan station to Le Chateau.

## Facilities

- Outdoor swimming pool
- Fireplace
- Cinema room
- Fully-equipped kitchen
- Air-conditioning
- Lift
- Library & bar area
- Chapel & office space
- Large gardens & vegetable garden
- Pétanque court
- 2 living rooms
- Fully equipped pool house with pizza oven and BBQ
- Access to hotel facilities: spa/3 swimming pools/2 tennis courts/3 restaurants/bar/jacuzzi/sauna/steam room/treatment rooms/fitness room/bike rental

