



## Chalet Kitsune Val d'Isere



### What we love...

We love the calming wellness area on the lower ground floor, with indoor swimming pool and sauna.

A true breath of fresh air, Chalet Kitsune is a luxury ski chalet in Val d'Isère that combines a traditional chalet feel with contemporary style and design.

The property's open-plan spaces and large windows allow natural light to flood in, and the clean lines and pared-back style bring a truly modern feel. The interiors are designed using a relaxing neutral palette, with open spaces that are great for gathering in as well as cosy bedrooms and boltholes where you can find a little peace.

At the heart of the property is the living and dining room where oak floors and wood panelling contribute to a modern rustic feel. Large, squashy sofas invite you to curl up with the papers and a friend to catch up on all the day's events, and a huge wood-burning fireplace warms the room and provides a focal point for gatherings with a glass of wine in the evenings. The large dining table, which comfortably seats 10 people, is a wonderful backdrop for long, leisurely meals that run late into the night. Nearby, a very contemporary and well-equipped kitchen with marble work surfaces provides all you need to self-cater, or simply sit back and watch your chef at work.

From the main living area, French doors open out onto the balcony where you can sit and enjoy breakfast or a night cap with views of the mountains. The very central location of Chalet Kitsune, just moments from the centre of town by car and close to the lifts, means you never waste a moment getting to where you want to be. The property is also close to the piste, so you can be exploring the mountains in no time. Staff are always on hand to make sure you never have to lift a finger.

On snowy afternoons, you might like to while away a few hours in the private spa, floating in the swimming pool and soothing any aching limbs in the spa's sauna. Then perhaps slip into something comfortable and curl up in front of a film in the TV room while your chef begins to prepare a gourmet meal for you all.

Each of the five bedrooms is designed to encourage total relaxation. Snuggle down into luxe cotton sheets for sweet dreams, while the snow coats the mountainside again, ready for more skiing adventures in the morning.





# Chalet Kitsune

## Rooms

Chalet Kitsune sleeps 10 guests across five bedrooms.

### Bedroom 1:

Double bedroom on top floor with en-suite shower room and private WC.

### Bedroom 2:

Double/twin bedroom on top floor with en-suite shower room and separate WC.

### Bedroom 3:

Double/twin bedroom on top floor with separate shower room or bathroom and separate WC.

### Bedroom 4:

Double/twin bedroom on top floor with separate shower room or bathroom and separate WC.

### Bedroom 5:

Double bedroom (140cm bed) on lower ground floor with en-suite shower room and separate WC.

Please note: bedrooms 2, 3 and 4 all share one WC in the hallway.

## Eating

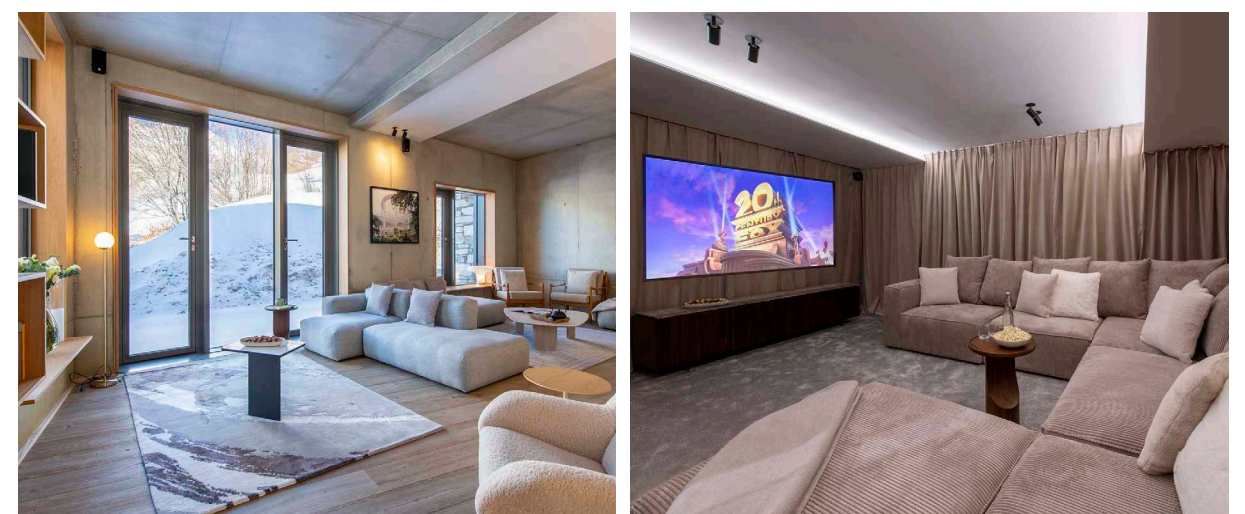
Your stay at Chalet Kitsune begins with a Champagne reception and canapés.

Each morning you'll wake to a filling breakfast to set you up for a morning on the mountain. Choose from local meats, cheeses, yoghurts, fruit preserves, cereals and pastries, with the option of a hot dish each morning, too.

When you trudge in from the slopes a freshly baked afternoon tea, with both sweet and savoury options, is laid out waiting for you. Then, a gourmet dinner is served later in the evening. The chalet's talented staff hail from some of the best restaurants in the world and have worked alongside Michelin-starred chefs so are ready to cater for you, whatever your needs and whims. Vegan, gluten-free and other special diets are carefully catered for, too. Wherever possible, ingredients are seasonal and locally sourced.

A selection of house wines from local vintners accompany each course and the bar is always stocked with spirits, non-alcoholic spirits and soft drinks.

The property can also be taken on a self-catered basis if you prefer. The chalet staff will be happy to help you with booking restaurant tables.







## Chalet Kitsune

### Kids

Light, bright and modern, with plenty of open-plan spaces to play in, Chalet Kitsune is a great choice for those travelling with children.

The ski-in/ski-out location makes getting onto the snow a stress-free experience for parents and the staff can help with boot and kit fitting in the comfort of your chalet, too.

When they're not out on the snow or at ski school, kids of all ages will enjoy splashing in the swimming pool, or just chilling out in front of a film in the separate TV room.

Three of the double bedrooms can be configured as twin rooms, giving you plenty of flexibility in the accommodation.

Nannies and babysitters can be booked on request.

### Location

Located right by Piste M, with access to the piste itself only a few metres away, this luxury chalet in Val d'Isère makes getting out onto the slopes each morning so easy.

The nearest airports are Chambéry (2 hours away), and Geneva and Lyon (each 2 hours 45 minutes away).

### Staff

Firefly pre-arrival concierge service

Chalet staff include:

- Chef
- Chalet host
- Daily housekeeping
- In-resort driver service
- In-resort concierge service
- Ski instructor (first 2 days)

Additional staff such as nannies and massage therapists can be arranged on request.

### Facilities

- Indoor swimming pool
- Sauna
- Wood-burning fireplace
- Wifi
- Laundry facilities
- Ski and boot room
- Balcony
- 1 outdoor parking space
- Separate TV room
- Open-plan living area
- Close to piste

