



## Julisam Estate Leogang



### What we love...

We love the indoor swimming pool area, with something for everyone to enjoy - a 14-metre swimming pool with waterfall, whirlpool to seat six and a play fountain with warm water floor jets and a virtual interactive aquarium.

Perched high up on the mountain, its Alpine marble exterior shimmering in the sunshine, Julisam Estate has more than a little star quality. This luxury ski chalet can host up to 20 people across its two interconnecting chalets.

Inside, an atmosphere of classic Hollywood glamour pervades. A self-playing grand piano tinkles to itself as you recline on circular sofas on a revolving platform, glass of bubbly in hand. Or take a few shots at the shiny steel pool table as you gaze at that amazing view across the valley.

Natural good looks and a stunning location go a long way, but here, care has been taken to ensure everything has been designed with total comfort in mind. In the private cinema, a Sony short throw laser projector and Marantz K surround sound make for a perfectly pitched filmic experience as you lay back on leather recliners looking up at a virtual starry sky. The living rooms also have Professional K Array sounds systems and all other rooms are equipped with Sonos. Fitness fans will love the top-of-the-range gym and indoor climbing wall, as well as the enormous indoor swimming pool area and choice of 2 saunas, perfect for both exercising and relaxing.

Each building has its own spacious terrace complete with al fresco living and dining spaces. An atrium with fire pit for enjoying late night marshmallows while wrapped in blankets and statement sculptures by artist David Harber make this a unique outdoor space, a little different from your average luxury chalet.

If you can drag yourself away from the high style and home comforts of Julisam Estate, there's so much to entertain you both on and off the slopes. Not only can you ski a different area every day, and take part in The Challenge (a seven-hour excursion without ever using the same lift) but there's also snowboarding, sledding and cross-country ski to try. If visiting during the summer, there is biking, hiking, rock-climbing and even golf. A perfect year-round location.

When you return from a day's adventures, you'll be happy to come home to perfectly relaxing, beautifully designed en-suite bedrooms. Some have slipper baths, some have walk-in shower rooms. All have huge, height-adjustable beds, Sonos sound and a recessable TV that disappears into the foot of the bed as you fall asleep. Sweet dreams.





# Julisam Estate

## Rooms

Julisam Estate sleeps 20 guests across ten bedrooms.

### Main Building:

#### Bedrooms 1

Master double bedrooms with en-suite bathroom

#### Bedrooms 2 – 5

Double bedrooms with en-suite shower rooms

### Guest Building:

#### Bedroom 6 and 7

Double bedrooms with en-suite bathrooms

#### Bedroom 8

Double bedroom with en-suite shower room

#### Bedrooms 9 and 10

Double/twin bedrooms with shared bathroom and separate WC

For smaller groups of up to 10 guests the main building, Chalet Julisam, can be rented on its own.

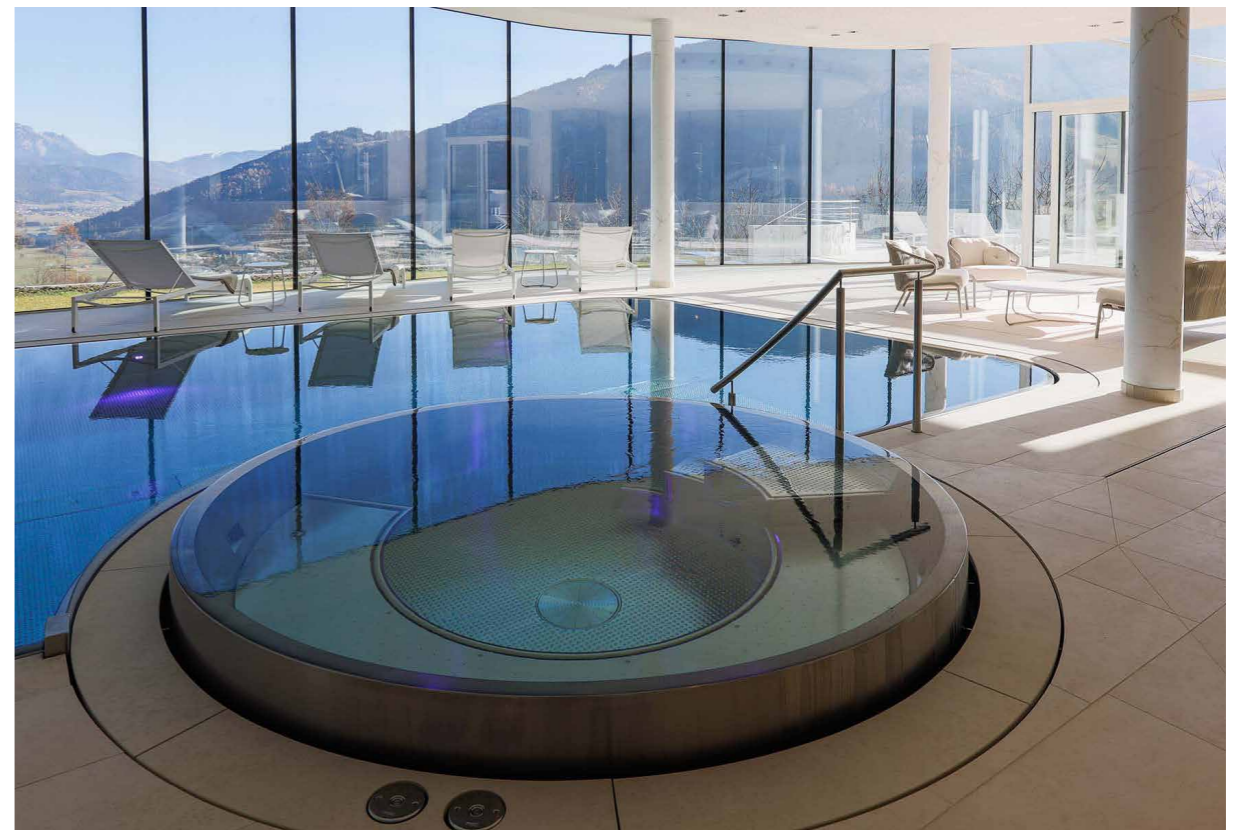
## Eating

Eating and drinking is a vital part of life at Julisam Estate but it's also exactly what you want to make it. The chef and chalet staff can offer a full catering service from gourmet tasting menus through to comfort food on the sofas, where you'll wake each morning to the aroma of breakfast being cooked and on six evenings, a delicious meal will be prepared for you in your chalet. They can also cater just special events or leave you to your own devices to self cater during your stay with grocery deliveries to see you through. It's entirely up to you.

The chalet's staff will also be happy to book tables for you in any of the area's wonderful restaurants, or to evenings further afield in Kitzbuhel or Salzburg. Such is the calibre of the restaurant scene in the area, you can dine in a different Gault Millau rated restaurant every night of the week.

However you choose to tailor your stay, your wine fridge will be fully stocked with everything from champagne for your first night to carefully selected reds and whites to accompany each meal. An excellent wine list is always available for you to choose from should you run low.

Please note that food and drinks are charged for separately at the end of your stay.







# Julisam Estate

## Kids

Julisam Estate calls itself a 'children's paradise' and is the perfect place to develop a love of skiing while also enjoying other things on offer.

The indoor play area includes climbing walls, playhouses, tunnels, ball pools, slides, toy shops and more. There are also no less than four PlayStations, including one with a 3.6m screen.

The indoor swimming pool area has a child-proof door and the pool has warm water floor jets, a play fountain, whirlpool and a virtual interactive aquarium.

Outside there are two huge playgrounds with a large slide as well as two trampolines, a sandpit, swing and more. There's even an astroturf football pitch.

Nannies, babysitters and ski instructors are available on request.

## Staff

Firefly pre-arrival concierge service  
Chalet staff include:  
Chalet manager  
Chef \*  
Chalet host(s) \*  
Housekeeper  
In-resort driver service \*  
In-resort concierge service

Nannies and massage therapists can be arranged on request.  
\* included when booked on a catered basis.

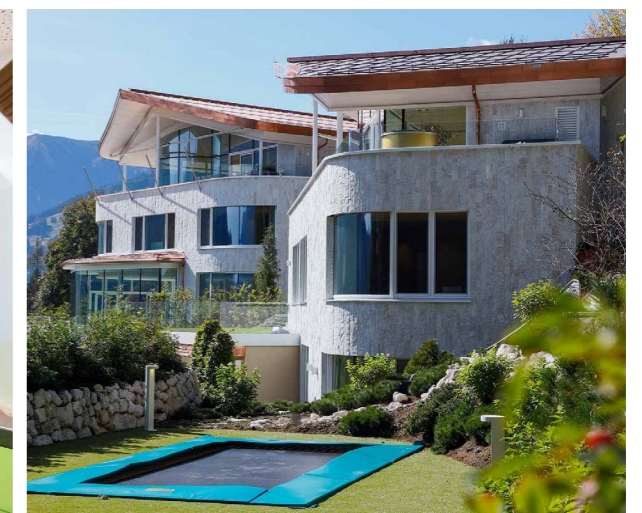
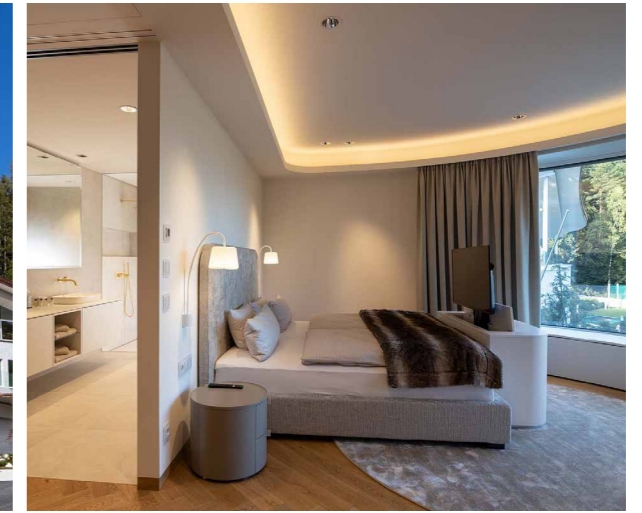
## Location

Set high up on a hillside in Leogang, Julisam Estate offers amazing access to the huge Ski Circus area and has more than 400km of slopes. The closest lift for nursery slopes and snow walking trails is the Schanteilift, just 0.8km away and the Krallerhof and Steinbergbahn are both around 2km away.

The centre of Leogang is just 5 mins away by chauffeur-driven car. The nearest airports are Salzburg, Innsbruck and Munich. A helicopter service can be arranged to several destinations.

## Facilities

- Indoor swimming pool
- Outdoor hot tub
- Cinema room
- Gym & Indoor Jacuzzi
- Lift
- Grand piano & Pool table
- Large underground garage
- 2 Saunas
- Firepit
- Indoor rock climbing wall
- 2 outdoor playgrounds
- Kids room with PlayStations
- 2 living rooms



To Book, call +44 (0)203 432 7784

www.firefly-collection.com