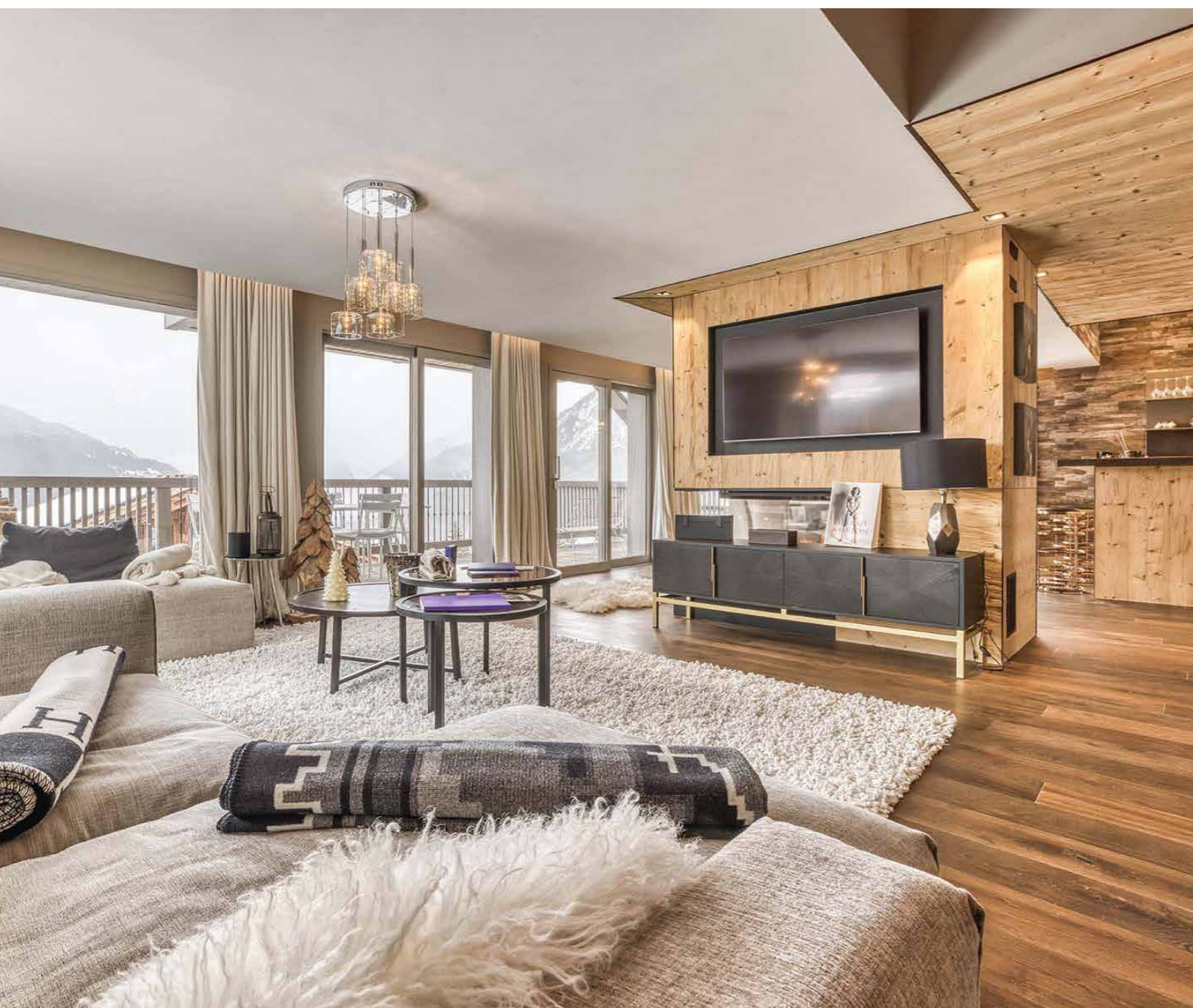




## Chalet Acélia Courchevel 1550



### What we love...

We love the super convenient setting, just a three-minute walk from the relaxed centre of Courchevel Village and the Grangettes lift for direct access to Courchevel 1850.

Designed for modern living and boasting a prime location, Chalet Acélia is an excellent choice for families seeking relaxed luxury and easy access to the vast 3 Valleys ski area.

Kick off your boots in the private boot room and head up to the second floor, which is dedicated to sociable open-plan living. This generous space is light and airy; floor-to-ceiling windows run the length of the room to showcase the mountain views, and a palette of grey, white and wood creates a modern feel with touches of traditional charm. At the heart of the room, a contemporary log burner invites you to sit and warm your bones after snowy mornings on the mountain.

Next-level relaxation comes courtesy of the wellness area, where you can sink deep into the warm waters of the indoor Jacuzzi. If skiing hasn't quite worked up your appetite enough, take time before dinner to jump on the SkiErg, spin bike or treadmill in Chalet Acélia's fully equipped gym.

At this luxury ski chalet in Courchevel, four charming alpine-style bedrooms each have an ensuite bathroom and access to the terrace. The standout space is the fifth bedroom: the master suite. Occupying the whole of the top floor, it's a haven of relaxation where guests can take long soaks in the freestanding tub, wake to glorious mountain views and enjoy their first coffee of the day in peace out on the private balcony.



# Chalet Acélia

## Rooms

Chalet Acélia sleeps 8 + 2 guests across five bedrooms.

### Bedroom 1

Master double bedroom on top floor with en-suite bathroom, separate shower and balcony access

### Bedroom 2 – 4

Double bedrooms on first floor with en-suite shower rooms and terrace access

### Bedroom 5

Bunk bedroom on first floor with en-suite shower room and terrace access

## Eating

Self-catered Chalet Acélia puts you in easy walking distance of the relaxed family-friendly restaurants and low-key bars in Courchevel 1550.

For times when you just want to stay put and eat in, the chalet has been designed to ensure that the dining and kitchen spaces are equipped with everything you need to whip up delicious meals for all the family. Invite your group to take a seat around the large dining table and enjoy leisurely evenings in the comfort of your winter home-from-home.

On sunny mornings, there's also plenty of room for hot drinks and breakfast out on the balcony.





## Chalet Acélia

### Kids

This spacious open-plan ski chalet gives children plenty of room to play and relax. A double bunk room with a TV offers younger guests a lovely space to chill out as well as sleep – it means that they can don their pjs, snuggle up and enjoy movie nights before they drift off to sleep.

When they've had their fill of mountain time, the Aquamotion leisure centre nearby is a brilliant option for all age groups, with its waterslides and large swimming pool.

### Staff

Firefly pre-arrival concierge service

Chalet staff include:  
Housekeeper (self-catered basis)  
In-resort concierge service

Additional staff such as nannies and massage therapists can be arranged on request.

### Location

Chalet Acélia enjoys an exceptionally convenient setting in Courchevel 1550; you're just a three-minute walk from both the heart of the village centre and the Grangettes lift, which will whisk you straight up to Courchevel 1850.

Chambery is the closest airport, approx. 1 hour 20 minutes away. Geneva, Grenoble and Lyon can all be reached in a little over 2 hours. Other options nearby include Moutiers station (30 minutes away) for train travel and the altiport up in Courchevel 1850 for helicopter or private jet travel.

### Facilities

Gym  
Indoor Jacuzzi  
Wifi  
Balconies  
Ski and boot room  
Mountain views  
Wood-burning fireplaces

