



## Marmotte Penthouse Verbier



### What we love...

We love the spectacular views across Verbier, which you can enjoy through the enormous floor-to-ceiling windows or from the south-facing balcony with its heater and comfortable seating.

Located in the centre of Verbier surrounded by snowy pines, Marmotte Penthouse occupies the uppermost floors of a chalet-style building just minutes from the nearest piste. Its beautiful alpine interiors are a haven of elegance and charm, where the modern and the rustic live in harmony, from the clean lines of the contemporary fireplace to the traditional wooden beams.

Spread across three floors, Marmotte Penthouse comprises five lovely bedrooms, of which the crowning glory is undoubtedly the master bedroom with its en-suite bathroom, Hammam shower and balcony with stunning views. There's even a bunk room and a dedicated children's bedroom, so there's plenty of space for your little ones.

The heart of Marmotte Penthouse is its magnificent open plan living area, where light floods in through full-height windows and

breathhtaking mountain panoramas lie beyond. It's here that you'll gather for home-cooked feasts, après-ski drinks, or hot chocolate by the flickering fire. Step out onto the sun-soaked balcony and you'll find outdoor furnishings draped with sheepskin throws, and a heater to keep you toasty as you admire the views.

Once you've returned from the slopes and left your equipment in the generous ski room with boot warmers, head straight for the private spa room, where you can warm up in the beautifully appointed Hammam and sauna. After dinner, you can while away the evening with a film in the cosy TV snug. There's also a handy office space for those who need to catch up on emails while they're away.

Cosy, inviting, and exceptionally spacious, Marmotte Penthouse is the perfect backdrop for an unforgettable luxury ski holiday.



# Marmotte Penthouse

## Rooms

Marmotte Penthouse sleeps 4 + 6 guests across five bedrooms.

### Bedroom 1:

Master bedroom on first floor with en-suite bathroom, separate Hammam shower and shared balcony access.

### Bedroom 2:

Double bedroom on second floor with en-suite shower room and shared balcony access.

### Bedroom 3:

Twin bedroom on second floor with en-suite bathroom.

### Bedroom 4:

Quad bunk room on second floor with separate shared bathroom and shared balcony access.

### Bedroom 5:

Twin bedroom for two children on mezzanine level with a separate shared bathroom.

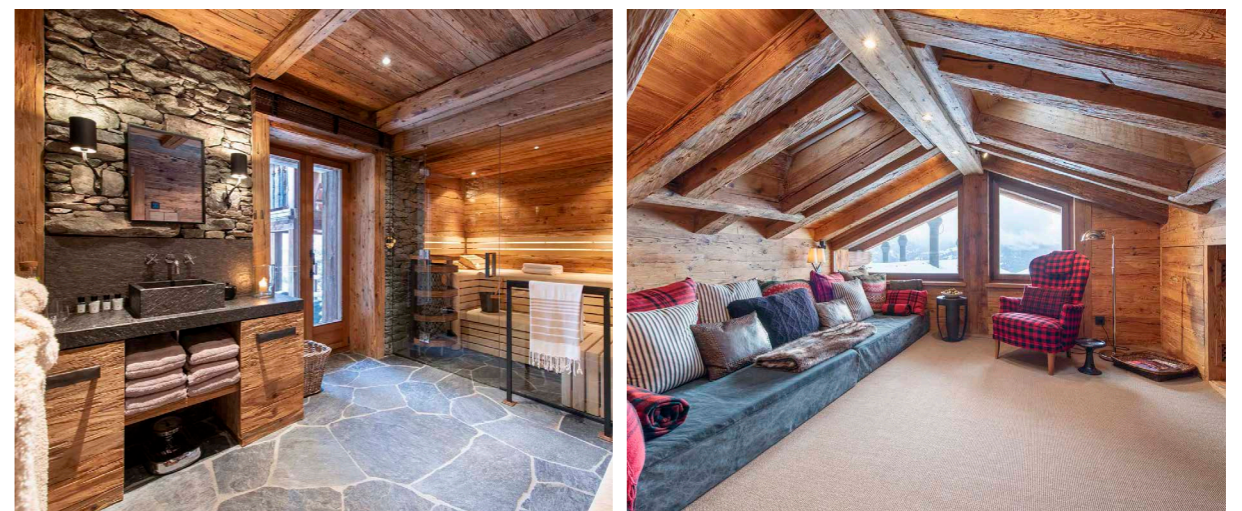
## Eating

Marmotte Penthouse is available on a self-catered basis, giving you the ultimate privacy and freedom to choose how you dine.

Passionate home cooks will love the open plan kitchen with its state-of-the-art appliances and bar seating, where your loved ones can pull up a chair with an apéritif while you prepare dinner. Combined with the spacious dining room, it's the ideal space for entertaining.

You can even skip the supermarket and take advantage of the shopping service (available for an extra cost), ensuring your cupboards are stocked with everything you need before you've even arrived.

Alternatively if you'd like a taste of the local cuisine, Verbier's many superb restaurants are a short stroll away.





# Marmotte Penthouse

## Kids

Marmotte Penthouse’s layout has been designed with children in mind, with plenty of spaces for them to claim as their own. The TV snug, tucked away on the mezzanine, makes the perfect hideout for little ones and teens alike. Nearby, the office provides space for colouring, or for older children to catch up on homework.

When it’s time to retreat for the night, they can choose between the quad bunk room or the cosy children’s bedroom in the eaves.

Everything can be arranged prior to your arrival to take the stress out of travelling with children, so that all you need to do on your first night is relax and let your little ones play or watch a film.

Childcare and ski lessons can also be arranged on request.

## Staff

Firefly pre-arrival concierge service

Chalet staff include:  
Housekeeping (self-catered basis)  
In-resort concierge service

Additional staff such as nannies and massage therapists can be arranged on request.

## Location

Marmotte Penthouse is situated in central Verbier, a 4-minute walk from the nearest Le Rouge piste.

Place Centrale is approximately a 10-minute walk away and the main Medran lift station a 3-minute drive.

Geneva Airport is a little over 2 hours away.

## Facilities

- Sauna
- Hamman
- Wood-burning fireplace
- Balconies
- Ski and boot room
- Mountain views
- Fully fitted kitchen
- Separate TV snug
- Open-plan living area
- Indoor parking for 2 cars

